



## Potty Training

### Rules & Procedures

#### Schedule

- ❑ **Feeding** – 3 times per day; leave bowl out for 10 minutes, then remove.
- ❑ **Water** – if your dog tends to over-do it with water, provide water 6 times per day. The dog may, however, drink his fill at each watering.
- ❑ **Bathroom Runs** – dogs adapt well to a set routine. Provide this routine for your dog and he will quickly follow suit. Try to incorporate the high-risk times (when dogs often have to go) into your schedule:
  - First thing in the morning
  - Last thing at night
  - After naps
  - About 10 minutes after eating
  - After coming out of the crate
  - After strenuous exercise or playtime.
  - When they act like they need to go (i.e., sniffing & circling)
- ❑ **Increase Time Between Runs** – Gradually increase the time between the bathroom runs. For a young puppy, you may start with trips every hour. But as the weeks go by, you should take him out less frequently as he learns to hold it better. By the time a puppy is about 6 months old, he can be expected to hold it for about a work day.

#### Indoors

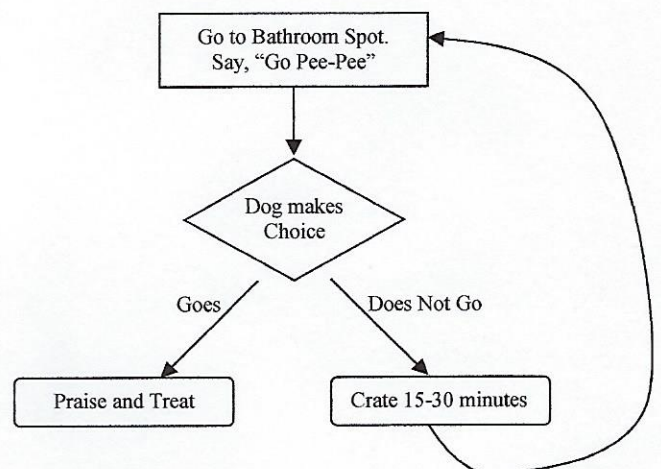
- ❑ **Supervise or Confine** – to prevent “bad” mistakes (the ones you don’t catch in the act), you must either *actively* supervise the dog or confine him to his crate. This must be done at *all* times. Each mistake that you don’t catch “in the act” will prolong the potty training process, as the dog learns that there is no consequence to his action.
- ❑ **Corrections** – When you catch the dog in the act, correct him with a startling voice correction and hand clap. You want the dog to be clear that you are

unhappy, but you do not want him to be afraid of you.

- ❑
- ❑ **After the fact** – If you find a mistake but do not catch the dog in the act, you must simply clean it up and forget about it. The only learning experience here is for the owner, who must redouble his supervisory efforts in the future!

#### Outdoors

- ❑ **Pick a Bathroom Spot** – Choose a bathroom spot and go to the same spot every time.
- ❑ **Command Phrase** – Choose a command phrase like “Go pee-pee” or “Get busy” and use it every time. Eventually the dog will be able to go on command.
- ❑ **It’s the Dog’s Decision!** – Give the dog only 5 minutes to go. During this 5 minutes he will make a choice: either he will go or he will not. If he goes, praise lavishly, *run inside and give him a super-treat*. If he does not go, quietly and quickly escort him inside to his crate. Then, in 15 to 30 minutes, let him out and try again. See flow chart below.



If you consistently provide the dog with these consequences, he will figure out it is in his best interest to go outside when he is supposed to.

**Remember the 3 P's:  
Patience, Persistence & Praise**