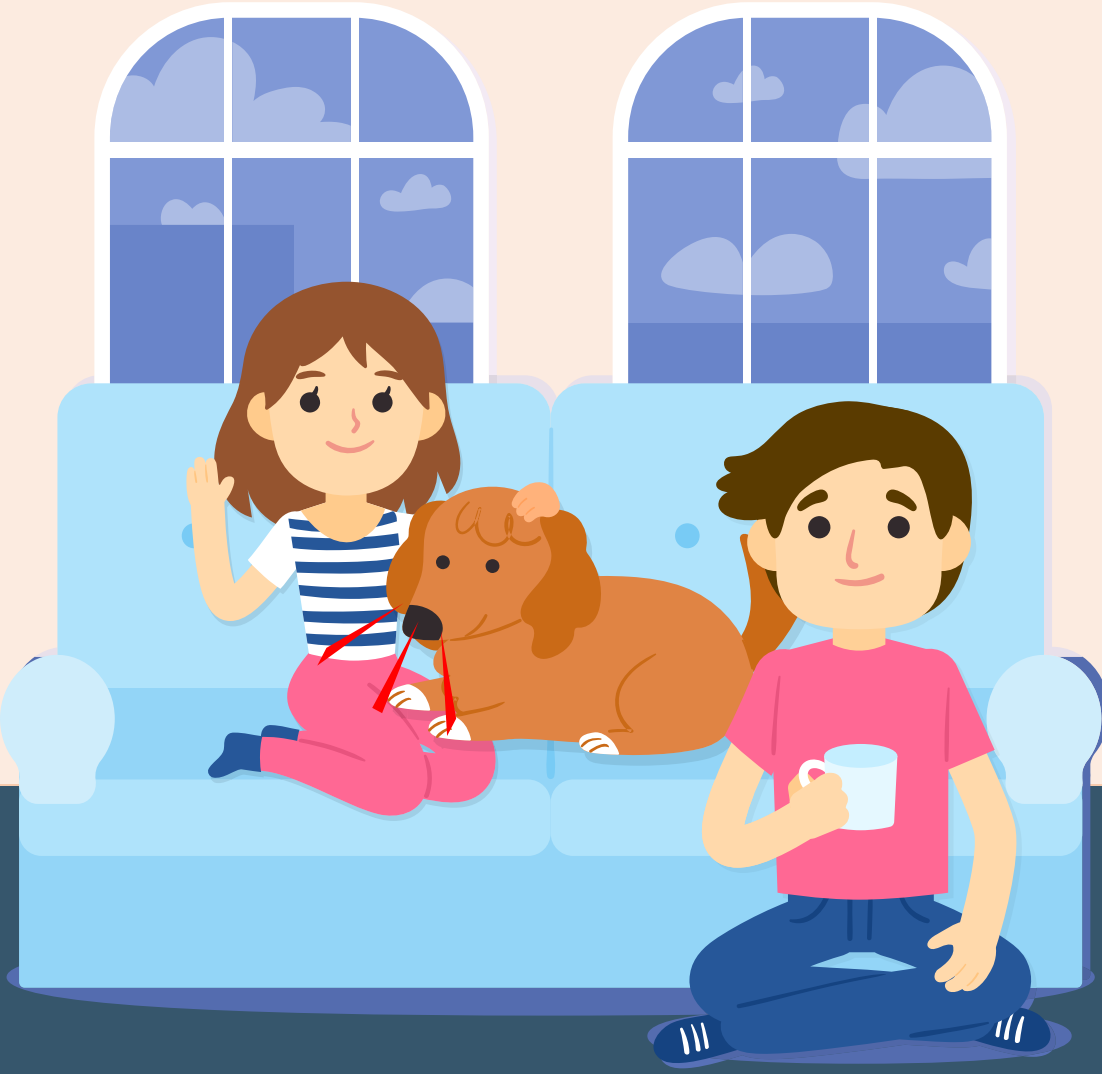
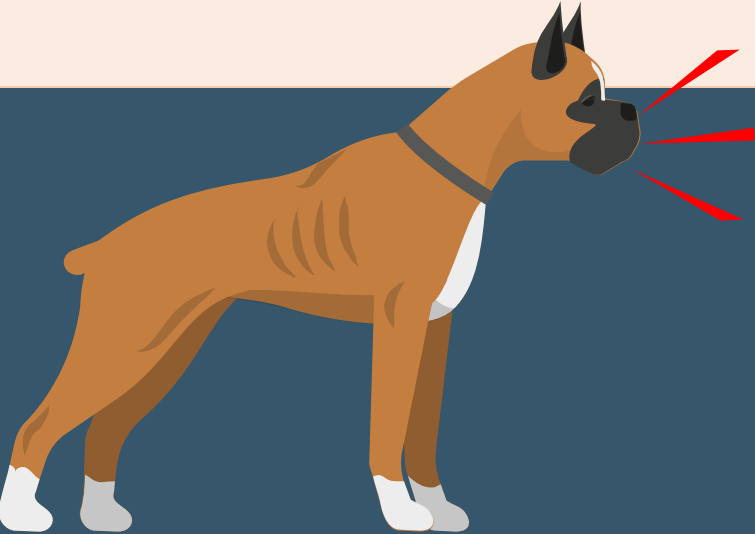
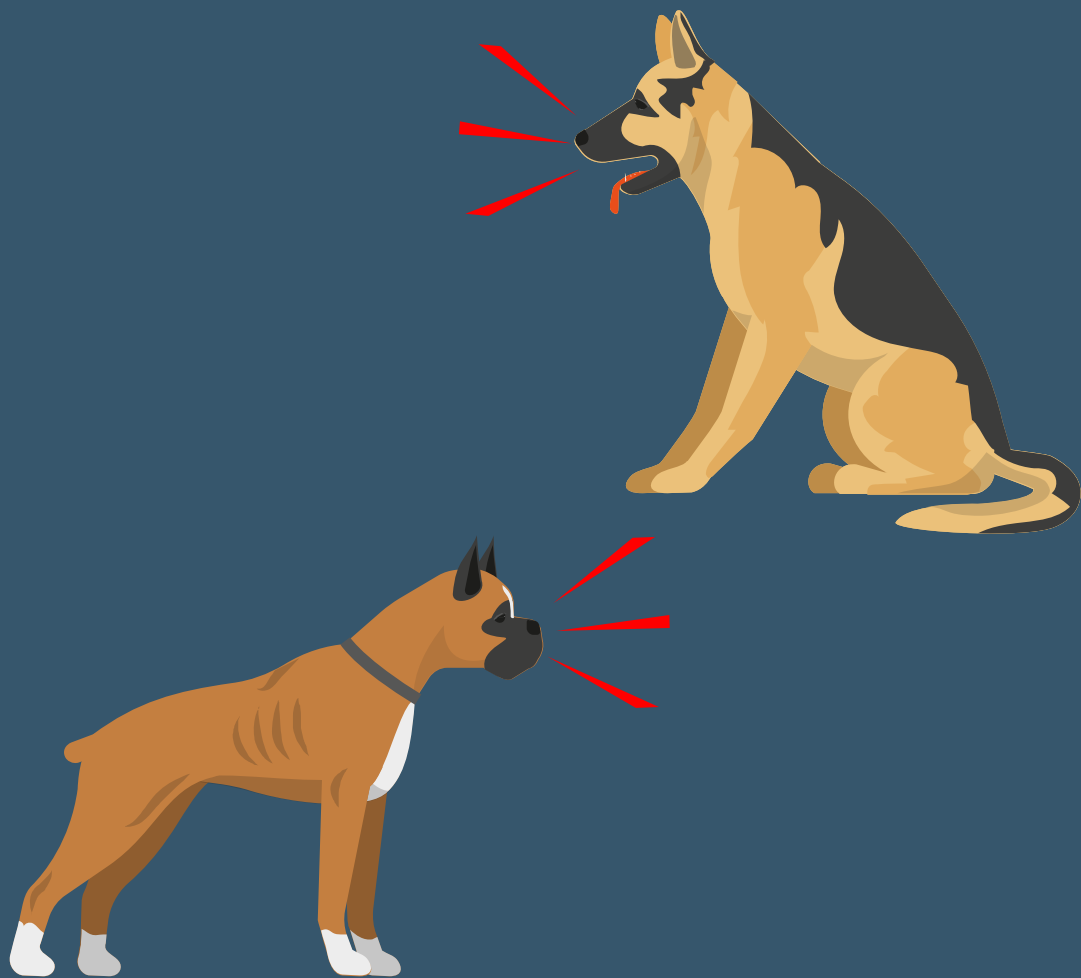
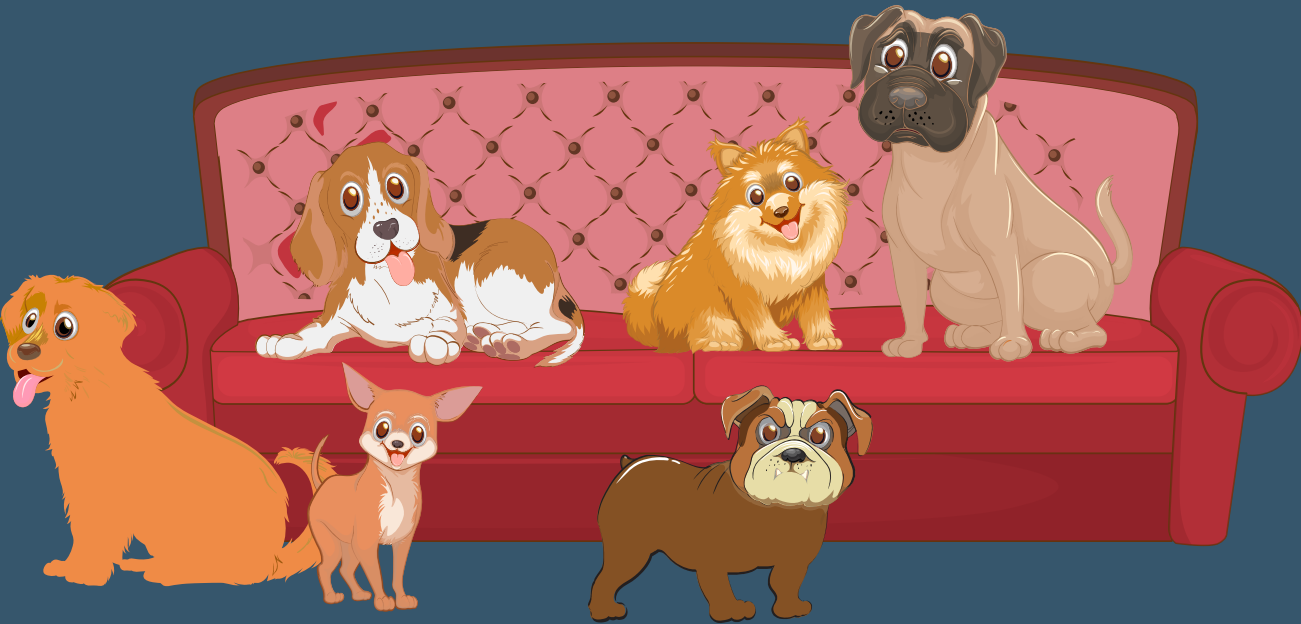


Aggression between dogs in the same household





- **Dangerous for dogs and people who intervene to break fight**
- **Intense and violent outburst**



- **Majority of the fights are between female dogs**
- **Fight in presence of their owner**
- **Younger dog initiates fight**

What triggers fight among dogs?



- **Paying attention to one dog**
- **Take out revenge on their sibling**



- **Excitement on owner's arrival**
- **Hearing doorbell**
- **Play sessions**
- **Walks & car rides**



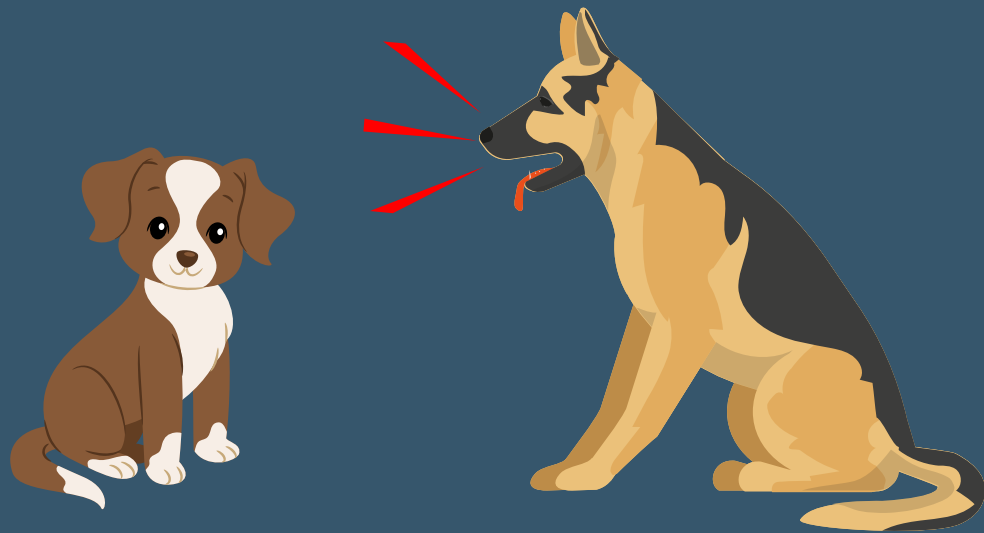
Conflict over

- **Food**
- **Toys**
- **Treats**
- **Sleeping beds**



Suffering from

- **Separation anxiety**
- **Phobia**
- **Anxiety**

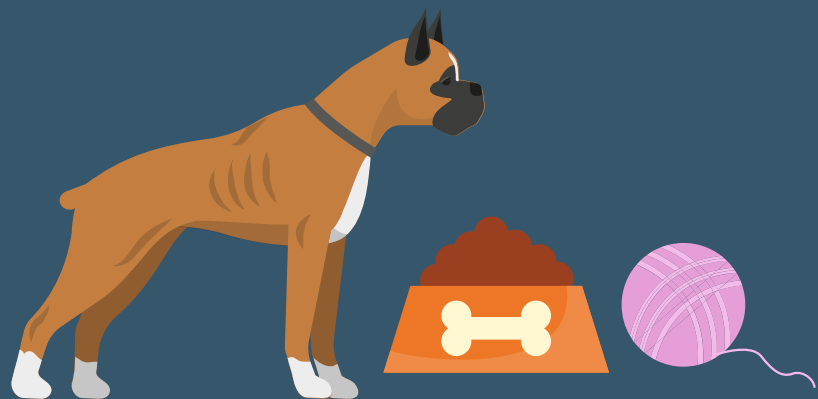


- **Dominance hierarchy**
- **Get along fine in owner's absence**
- **Prevalent in presence of owner**
- **Subordinate dog feels protected**



**Dogs, who are not socialized
during their puppyhood**

Ways to manage Inter-dog aggression



- **Avoid trigger inducing situations**
- **Should be fed & played with separately**
- **Unable to see & aggressively pose at each other**





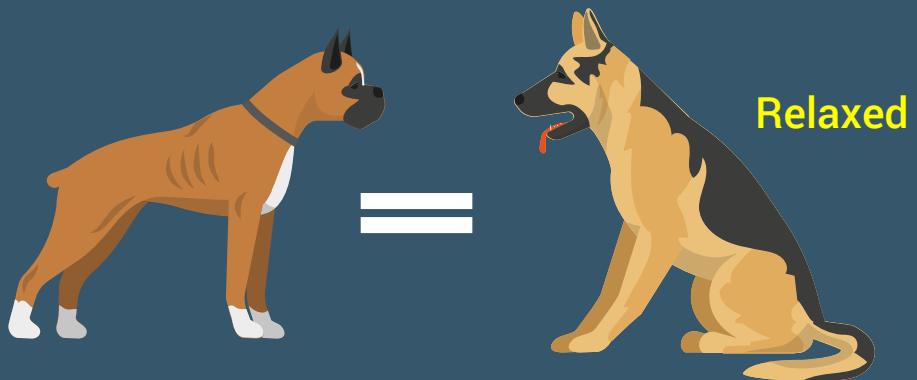
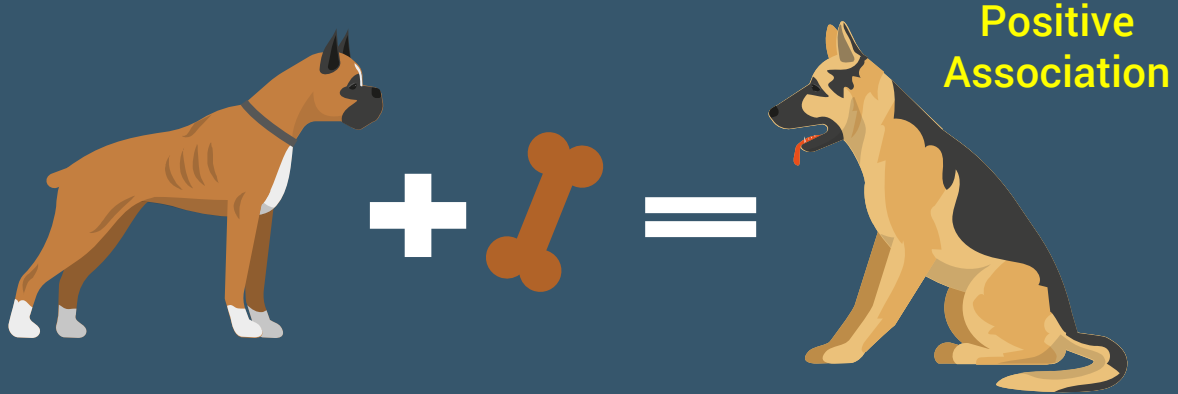
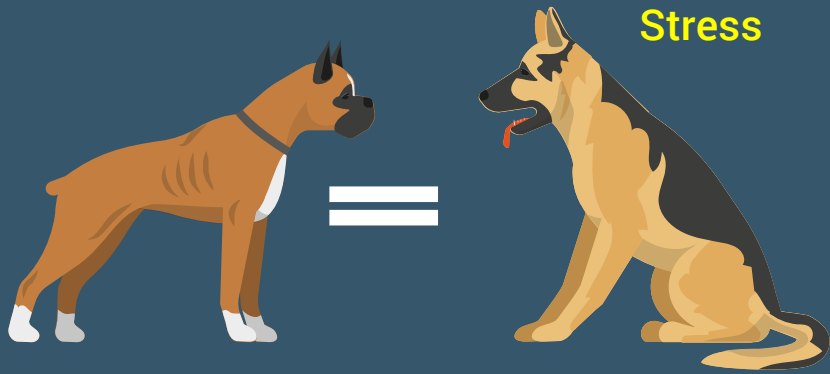
- **Teach - Nothing in life is free**
- **Come, sit & stay commands**
- **Reward them, when they obey commands**



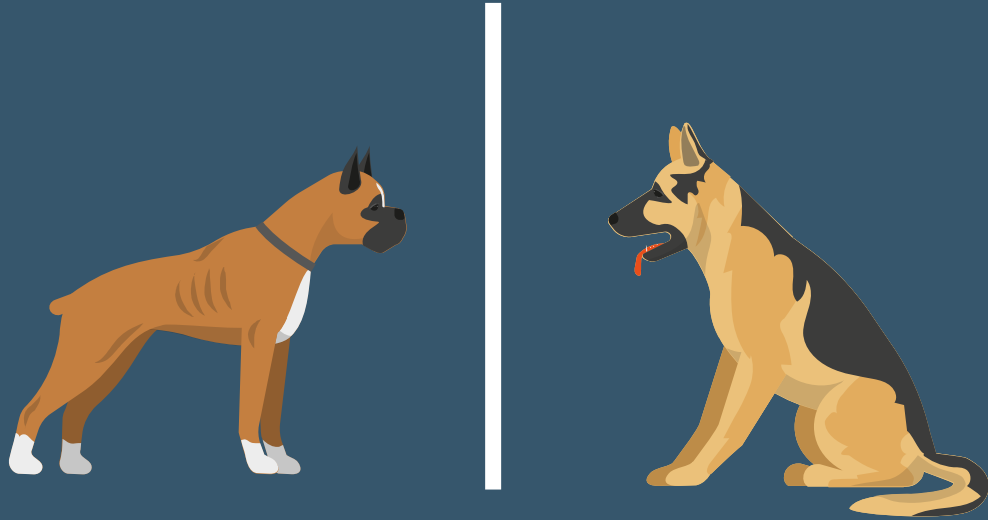
- **Ignore his attention seeking behavior**
- **Interaction should be initiated & stopped by you**
- **Work with each dog individually**



- **Create a hierarchy**
- **Pack mentality - stronger dog gets everything first**
- **Choose a dog, who will get everything first**
- **Reduces unpredictability among dogs**
- **Second dog needs to wait until first dog has earned the resource**



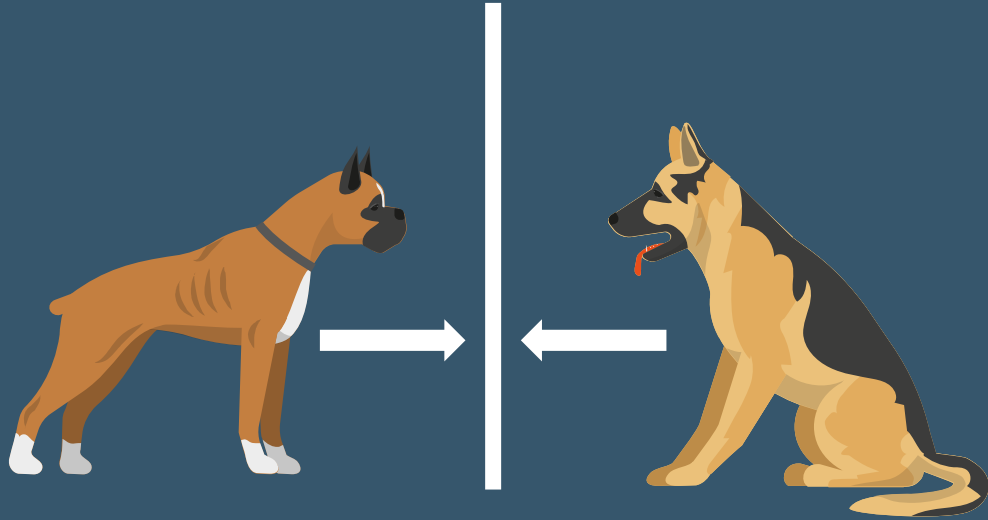
- **Counterconditioning**
- **Change your dogs' association with each other from negative to positive**
- **Use a high value item like treats, toys**
- **Gradually expose your dogs to each other**



- **Determine threshold distance**
- **Work at a greater distance if threshold distance for one dog is greater**



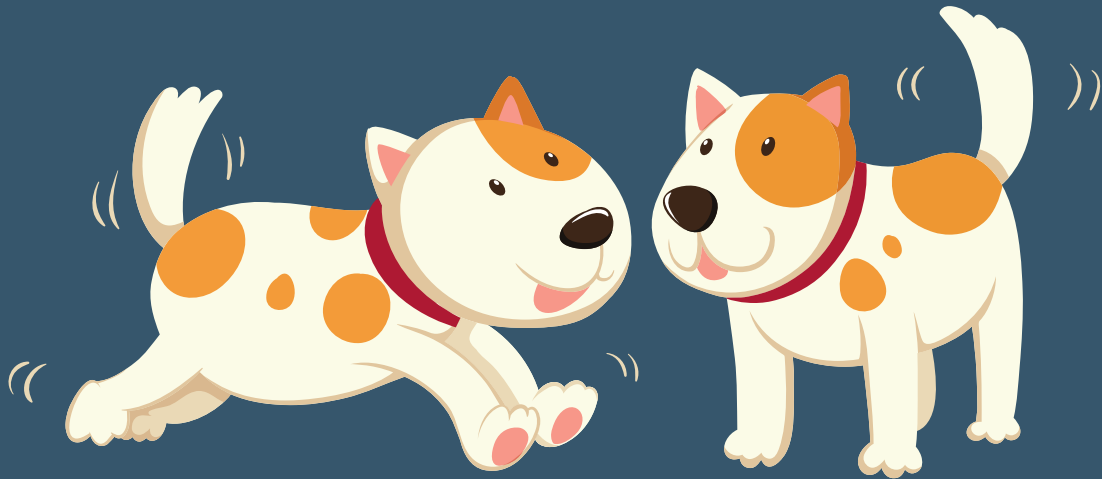
- **Two handlers required**
- **Each handler and dog should be far enough from the other handler**
- **Obedience commands**



- **Gradually decrease distance**
- **Increase distance if aggression is observed**
- **Short & frequent sessions**



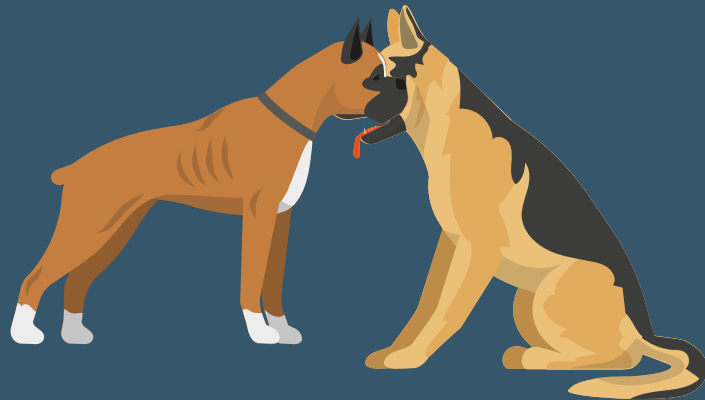
- **Walk dogs together to help them bond**
- **Initially, ensure that handler walks between the dogs**
- **Progress to dogs walking side by side**



- **Make sure your dogs are properly socialized**
- **Work on dog-to-dog socialization skills**
- **Perform with just one dog at a time**

- **Invite a friend with his dog**
- **Safe distance between dogs**
- **Allow them to sniff each other**
- **Allow them to play if they seem relaxed**
- **Repeat the process**





- **Dangerous Situation - If you have to intervene to stop your dogs' fight**
- **You may get bitten**
- **Try to break up the fight from a distance**

Startle them & redirect their attention



Make loud noise



Spray water